

IN:SPIRATION

Welcome

to the first edition of IN:SPIRATION, our news magazine, which will keep you regularly informed on novelties and highlights from all CERTINA PACKAGING companies.

The following pages will introduce you to the latest products from our standard range, eye-catching references and embellishing options and, of course, updates on sustainable solutions from our Green line concept. **Our goal is to inform and inspire you!**

All CERTINA PACKAGING companies are competent experts in innovative and sustainable plastic packaging and offer you everything from material selection to production and decoration from a single source. Place your individual requirements for product protection, shape and design in our expert hands. Thanks to advanced technologies in each of our companies, we guarantee the highest quality, maximum flexibility and efficiency in the production of your customized packaging solutions.



”

The entire CPG team wishes you a lot of fun reading and IN:SPIRATION!

Christian Abicht
Managing Director CERTINA PACKAGING GROUP,
HK COSMETIC PACKAGING and REBHAN

FOCUS ON SUSTAINABILITY



Discover our sustainable solutions for your product packaging - whether recyclable glass-like polymers or numerous recycled plastics. We have them all!

GREEN  line

You can be sure that we offer all state-of-the-art plastics - whether they are mono-materials, recyclable or recycled polymers - and you can rely on our competent advice on their suitability for your project.

Our young, initiative-taking management team is consistently committed to your individual projects and wishes. **Do not hesitate to contact us even for your most innovative and demanding requirements!**

New Standards

Do you know the latest products from our standard programme? If you are interested, please scan the QR code to access the online product catalogue or contact your sales representative directly. We are happy to support you!



DIEGO ONE LINE

Volume:	50 ml	75 ml
Reference.:	33323	33272
Surface:	matte, shiny	
Material:	PP	PP
W x H (mm)	46 x 94.4	48.7 x 102.1



Now completely made of mono-material

FENICE

new volume



Volume:	50 ml	75 ml
Reference.:	4193	4204
Material:	HDPE	HDPE
W x H (mm):	49 x 89	53 x 108
Weight (g):	8.5	10.5
Neck type:	special neck REBHAN	



QUALIFORM
COMFORT PACKAGING

Comfortable & ergonomic haptics –
perfectly suitable for **HYGIENE PRODUCTS**



All standard products
are also available
from **recycled
materials!**

BOSTON



Volume: 500 ml

Material: HDPE, PP, PP/ADFLEX

W x H (mm): 77 x 125

Neck type: 28/410



REBHAN
Kunststoffverpackungen

sharp
edges

113 mm



The
trend
bottle shape
2023

bevelled
edges

QUALIFORM
COMFORT PACKAGING

93 mm



MIRO



Volume: 200 ml

Reference.: 4201

Material: HDPE

W x H x D (mm): 75 x 113 x 29

Weight (g): 25

Neck type: 24/410



ELEGANCE



Volume: 200 ml

Material: HDPE, PP, PP/ADFLEX

W x H x D (mm): 70 x 93 x 36.5

Weight (g): 24

Neck type: 24/410



NEW DOUBLE WALL CLOSURE



Reference.:	33317 (REBHAN 1864)
Surface:	matte, shiny
Material:	PP
Neck type:	24/410

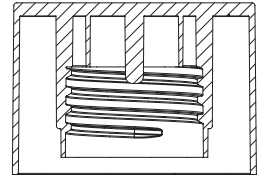


Now completely made of mono-material

Suitable for REBHAN standard series COLONNA, EMOTION, OPTIMA, SPA and VARIO. Perfectly match with COLONNA 150 ml.



Exclusive optics –
injection point
inside



Suitable for CLASSICO
(150 - 250 ml) and
different REBHAN
standard bottles

TWO PART CLOSURE

Reference.:	33316 / 32873
Surface:	shiny
Material:	PP, SAN
Neck type:	24/410



Now also available in 50 ml

KIM RE-FILL

Volume:	50 ml
Reference.:	32921
Surface Jar:	shiny
Surface Lid:	matte, shiny
Material:	PET, PP, SAN
W x H (mm):	66.38 x 51.5

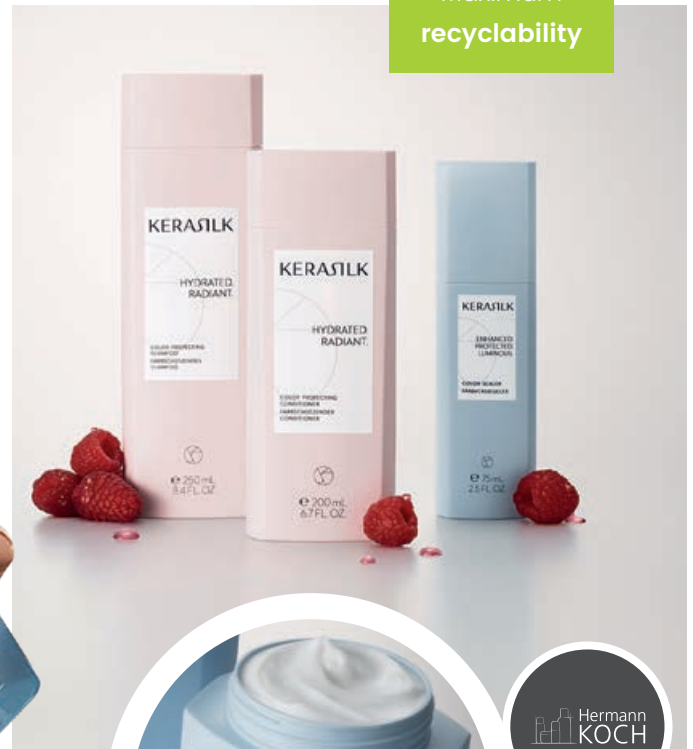


Find more RE-FILL products here:



Customer References

All CERTINA PACKAGING GROUP companies look back on long-standing partnerships with internationally renowned cosmetics brands. Thanks to our high quality standards, professional consulting and state-of-the-art production processes, we are able to meet even the most extravagant requirements of the beauty industry.



PRE:STIGE KERASILK

Relaunch as a Master Brand with Packaging Solutions from HK COSMETIC PACKAGING and REBHAN

The relaunch of a globally renowned premium brand is always an exciting challenge for packaging experts. We are delighted that the Kao Corporation Salon Division chose HK COSMETIC PACKAGING and REBHAN for the relaunch and placement of KERASILK as an independent master brand. Expertise, smooth cooperation and

technical synergy effects resulted in the implementation of a well-balanced, packaging concept with great presence that perfectly reflects the unique KERASILK look & feel. The minimisation of packaging and the use of recycled mono-material result in optimum sustainability and recyclability.

Many vibrant colors



Extremely high percentage of recycled PCR

Eltern für dich

With three-dimensional relief embossing

REBHAN Kunststoffverpackungen

EX:CEPTIONAL

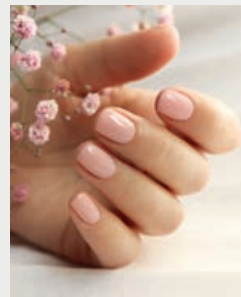
ELTERN für dich

A Cooperation focusing on maximum Sustainability: ELTERN für dich & REBHAN

Maximum sustainability in terms of content and packaging was the key requirement for the groundbreaking body care series from ELTERN für dich. The objective: anti-allergenic, fragrant natural cosmetics in sustainable, upbeat and tactile packaging!

Thanks to creativity, expertise and state-of-the-art technology, the REBHAN team implemented the optimal solution: co-extruded, colourful, ergonomic packaging with an extremely high proportion of recycled PCR plastic certified for rinse-off and leave-on products with relief embossing. This three-dimensional, haptically fascinating solution replaces any finishings.

Mission accomplished!



CHANEL

QUALIFORM produces an elegant Tottle for Chanel's Camélia Nail Oil

CHANEL has opted for a special packaging solution for the launch of its new Camélia Nail Oil - a squeezable tottle. In addition to optimal dosing, CHANEL wanted to achieve a brand-typical, timelessly elegant look and a velvety touch. The solution: Translucent, smooth material allows the delicate rosé colour of the oil to shine through, while the cap is kept classic in black with the logo and an embossing on the top. A discreet pad printing technique on the back enhances the clear, elegant appearance of the tottle.



100% recyclable mono-material



QUALIFORM COSMETIC PACKAGING



FRESH

Natural & sustainable: FRESH launches “MILK” Body Lotion in an eco-friendly Flacon by QUALIFORM

FRESH, part of the legendary LVMH Group, has launched the pioneering “MILK” body care collection based on plant milk. Authentic design and maximum sustainability were a must-have for the packaging. QUALIFORM manufactured a flacon for the “MILK” body lotion that is reminiscent of the shape of traditional milk bottles, with reduced, trendy printing in attractive natural colours. It consists of recycled materials and is designed for optimal recyclability also in regard to its weight.

NATUCAIN

NATUCAIN presents its Hair Mask in an elegant, Mono-Material Packaging

NATUCAIN combines nature and science to develop effective hair care products against hair loss and to promote hair growth – vegan, natural and cruelty-free. The packaging is provided by HK COSMETIC PACKAGING: refined, tactile, natural and minimalistic. The stylish matte green jar from the ANTONELLA standard series is made of 100% PP mono-material and is 100% recyclable.



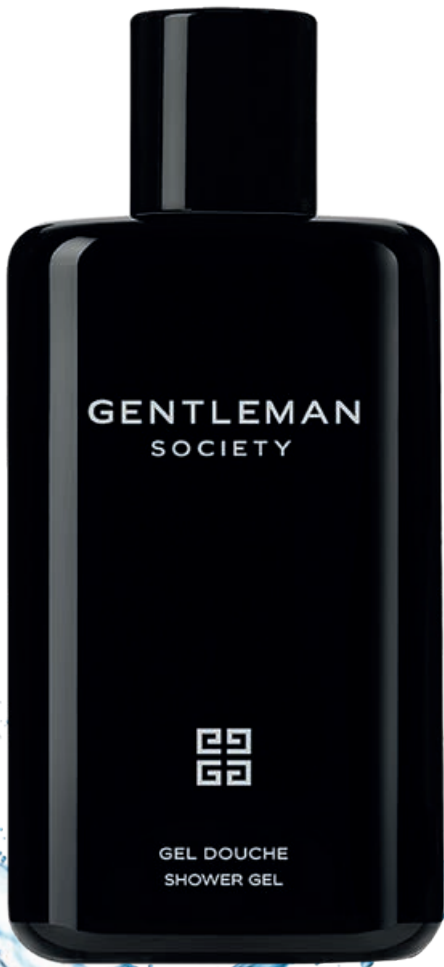
100% recyclable
mono-material



NATUCAIN bottles are COLONNA series from REBHAN



NA:TURAL



DIS:TINGCTIVE



QUALIFORM
COSMETIC PACKAGING

GIVENCHY

Distinctive QUALIFORM Flacon for Givenchy "Gentlemen Society" Shower Gel

The distinctive "Gentleman Society" grooming line by Givenchy has been further enhanced: For the shower gel, QUALIFORM produces a high-quality, mystically black flacon in a generous format, which consists of 50% recycled plastic. The shape is perfectly harmonized with the rest of the collection, including the glass perfume. This men's grooming line stands out for its masculine, distinctive and unique design.



SALI HUGHES

X Revolution Skincare Collection Basics for the Beauty Routine - naturally sustainably packaged

The renowned journalist and beauty expert Sali Hughes and Revolution Skincare launched simple, uncomplicated and effective basics for daily skincare: vegan, cruelty-free - and in an environmentally friendly packaging. The ANTONELLA series jars in differing sizes are made of 100% recycled PP and coated in different matte pastel shades, depending on the product. Of course, the flacons are supplied by REBHAN.





VELVETY MATTE
soft-touch-lacquering



Noble
hot foil
stamping



Practicable
fill level
display

AMOUAGE

AMOUAGE & ADA Cosmetics present premium Hotel Amenities in luxurious Packaging by REBHAN

The exceptional ADA Cosmetics hotel amenities collection from the globally renowned luxury fragrance brand AMOUAGE indulges guests around the world with exquisite care products which call for adequately precious packaging.

Our customer's wish was that the flacons should follow the characteristic wave form of the AMOUAGE seal. Thanks to their experience, expertise and proficiency, the REBHAN packaging professionals have managed to master this extremely tricky challenge. Two of REBHAN's in-house decoration techniques - hot foil embossing in gold and velvety-matte soft-touch finishing - give this exquisite collection an extraordinary polish. A practical on-top feature for hoteliers: The discreetly integrated level indicator of dispensers and flacons facilitates inventory control by housekeeping.

The logo outline of AMOUAGE was designed as bottle shape



SU:PREME

GREEN line



Sustainability and a high level of environmental awareness have been a priority for all companies within the CERTINA PACKAGING GROUP for years, as demonstrated by our numerous environmental certifications. Our extensive portfolio of recycled or bio-based polymers as well as 100% recyclable mono-materials form part of our ecological practices.

Eastman CRISTAL™ ONE E



Brilliant Sustainability – REBHAN takes the Lead in using Eastman Cristal™ One E

Eastman Cristal™ One E has been specially developed for extrusion blow moulding (EBM) and is ideal for the manufacturing of high-quality glass-like flacons. This innovative material is outstanding with its absolute clarity, brilliance and toughness, while being 100% compatible with standard PET recycling streams! Moreover, Cristal™ One E offers limitless design possibilities: sharp-edged, thick-walled shapes with solid, high-quality bottoms and delicate embossments can be easily implemented. A crystal-clear choice for sustainability!



LUMENE Oy presents its innovation Nordic Hydra Birch Dew Jelly in a luxurious, thick-walled REBHAN bottle which is produced with 50% chemically recycled Eastman Cristal™ One E Renew in EBM and is fully recyclable.



Can be used for numerous standard bottles



VISIONARY

rPP recycled PP



PreProp - Leave on



- 95% recycled material
- Suitable for leave-on products

TRUCIRCLE™



- 100% biobased
- Made from talloil waste product from wood industry
- ISCC certification required

Limex



- Combination of PP and 50% stone powder
- Heavier feel
- Soft-touch surface

PCR PP



- QUALIFORM exclusivity
- Available for all PP standard bottles

rPET recycled PET



PCR PET #F ultra clear QUALIFORM exclusivity (Pictures are 50% rPET)

QUALIFORM



- ✓ FDA
- ✓ EFSA



rHDPE recycled HDPE



Different PCR materials available

REBHAN



In the Co-Ex process, rHDPE can be processed up to 50% in the middle layer and up to 80% in the outer layer.



- ✓ FDA
- ✓ LEAVE-ON
- ✓ RINSE-OFF



Different PCR materials available (Pictures are 50% rPET)

REBHAN



- ✓ FDA
- ✓ EFSA



PCR HDPE QUALIFORM exclusivity

QUALIFORM



- ✓ FDA



PET Claro (50% chemically recycled material)

Hermann KOCH



- ✓ FDA
- ✓ EFSA



SULAPAC® biobased material



- ✓ FDA
- ✓ EFSA

Premium Flex 35
82% biobased



- free of microplastics
- wood-based
- biological degradable

Are you inspired?

You would like to know more about our standard programme or find out about sustainable solutions? Or do you have a very special packaging project that you would like advice on? We are always at your service:



HAND IN HAND FOR SUSTAINABLE TOYS

QUALIFORM and Falk Toys are cooperating to ensure that children grow up in a world where sustainability is of prime importance. PP or HDPE leftovers generated during the production process that can not be recycled internally are delivered to Falk Toys, which is only 5 km away from QUALIFORM. Here, the material is given a second life - for example, as tractors or motorcycles made from up to 70% recycled material. Our contribution to sustainability: Reduced transport pollution and the guarantee of meaningful reuse of our production scrap.



CONTACTS

HK Cosmetic Packaging

Phone +49 9561 240-0 | info@hkoch.de
www.hkoch.de

QUALIFORM

Phone +33 4 7473 1616 | info@qualiform.pro
www.qualiform.pro

REBHAN

Phone +49 9265 75-0 | info@rebhan.de
www.rebhan.de

TRASSL Polymer Solutions

Phone +49 9642 9207-0 | info@trassl-polymer.de
www.trassl-polymer.de

DO NOT MISS ANY NEWS



Feel free to follow us on social media.



CPG Marketing
marketing@certinapackaging.com



Many thanks to all our customers who have provided us with product images.

Image rights istockphoto: Lolkaphoto, lovelyday12, Maryna Andriichenko, Antonel, Andrii Kozlytskyi, seamartini, marigo20, NeonShot, nata789